



- [Home](#)
- [About](#)
- [Contact](#)
- [RSS](#)

Adventures in Benchmarking - Part 7 : Results

May 11th 2009

Richard Braddock

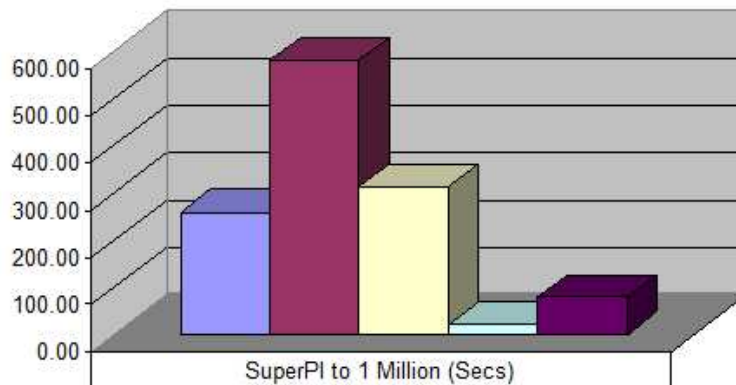
One Comment

[respond](#)

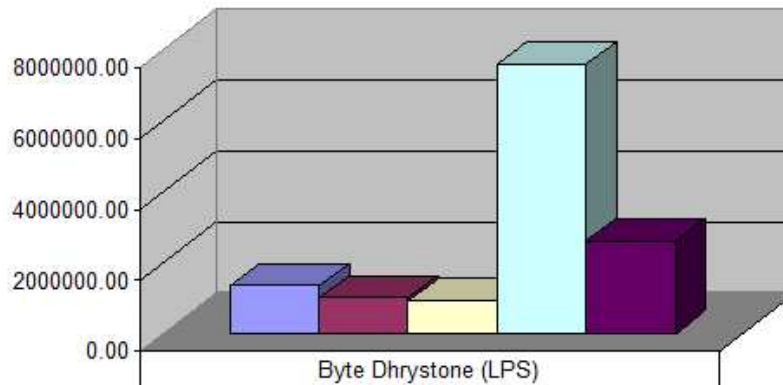
[trackback](#)

[Show Prerequisite Notes »](#)

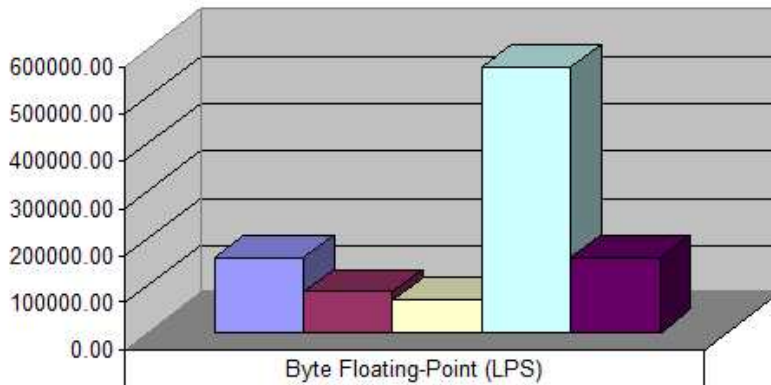
Performance Results



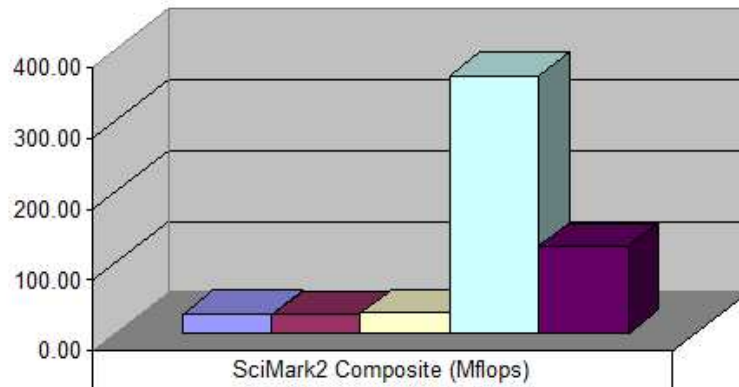
	SuperPI to 1 Million (Secs)
PIII 600MHz	259.21
AMD K6-2 550MHz	581.58
VIA Eden 667MHz	312.00
Intel Core2Duo T7200	20.10
Intel Atom N270	79.43



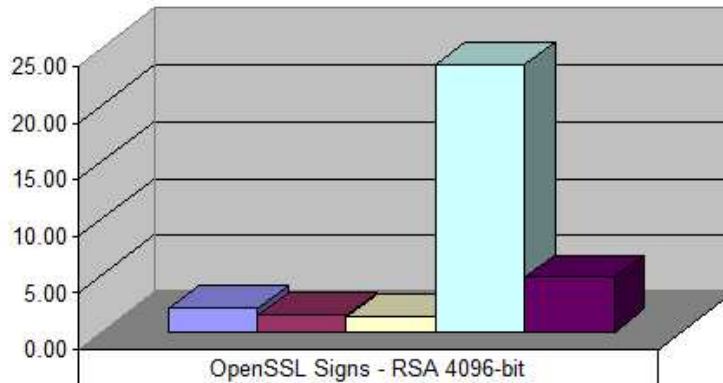
Byte Dhrystone (LPS)	
PIII 600MHz	1352852.60
AMD K6-2 550MHz	979957.80
VIA Eden 667MHz	894414.14
Intel Core2Duo T7200	7585408.00
Intel Atom N270	2597907.5



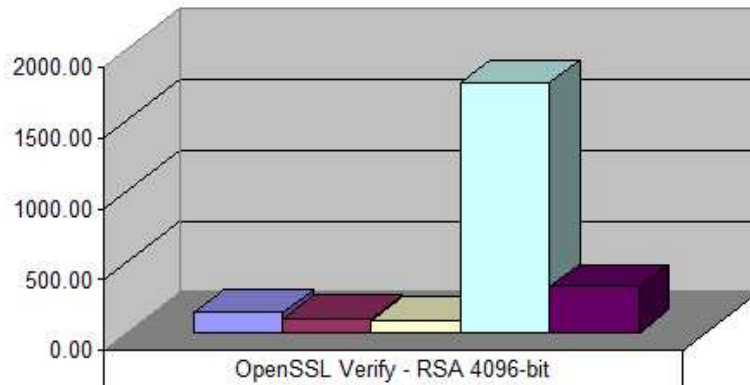
Byte Floating-Point (LPS)	
PIII 600MHz	158469.20
AMD K6-2 550MHz	85238.40
VIA Eden 667MHz	66496.23
Intel Core2Duo T7200	562561.70
Intel Atom N270	160076.2



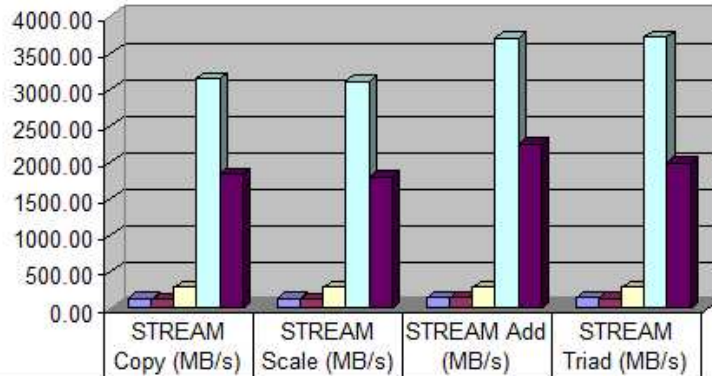
SciMark2 Composite (Mflops)	
PIII 600MHz	26.49
AMD K6-2 550MHz	25.98
VIA Eden 667MHz	28.27
Intel Core2Duo T7200	363.64
Intel Atom N270	123.54



OpenSSL Signs - RSA 4096-bit	
PIII 600MHz	2.00
AMD K6-2 550MHz	1.40
VIA Eden 667MHz	1.30
Intel Core2Duo T7200	23.62
Intel Atom N270	4.8



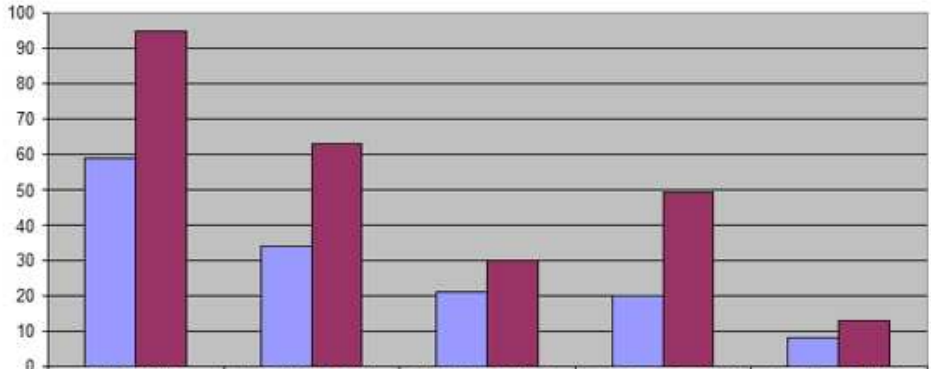
OpenSSL Verify - RSA 4096-bit	
PIII 600MHz	143.00
AMD K6-2 550MHz	94.50
VIA Eden 667MHz	85.30
Intel Core2Duo T7200	1766.00
Intel Atom N270	323.7



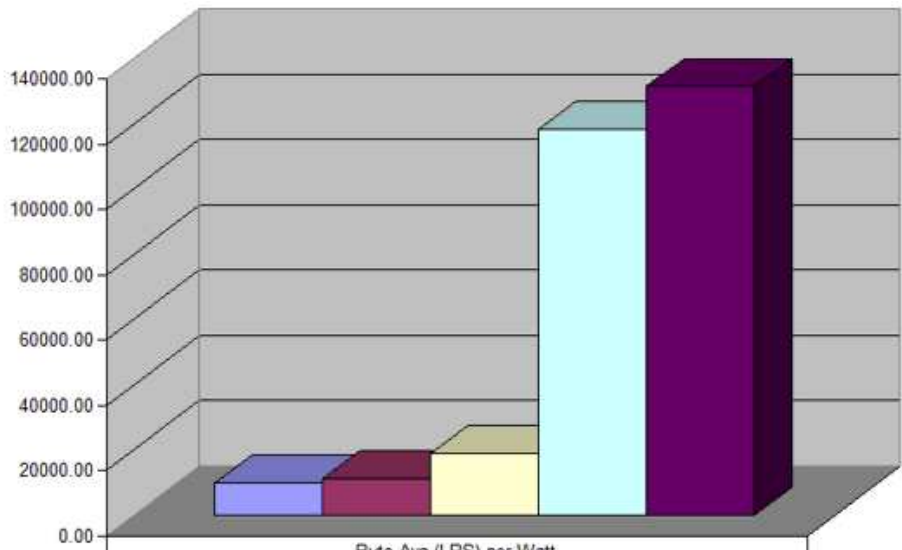
	STREAM Copy (MB/s)	STREAM Scale (MB/s)	STREAM Add (MB/s)	STREAM Triad (MB/s)
PIII 600MHz	123.45	122.29	134.06	129.63
AMD K6-2 550MHz	118.18	117.69	131.67	123.43
VIA Eden 667MHz	275.64	274.52	274.71	274.53
Intel Core2Duo T7200	3146.83	3116.17	3707.40	3722.64
Intel Atom N270	1841.51	1808.72	2259.47	2002.76

Performance vs Power (Computational Density) Results

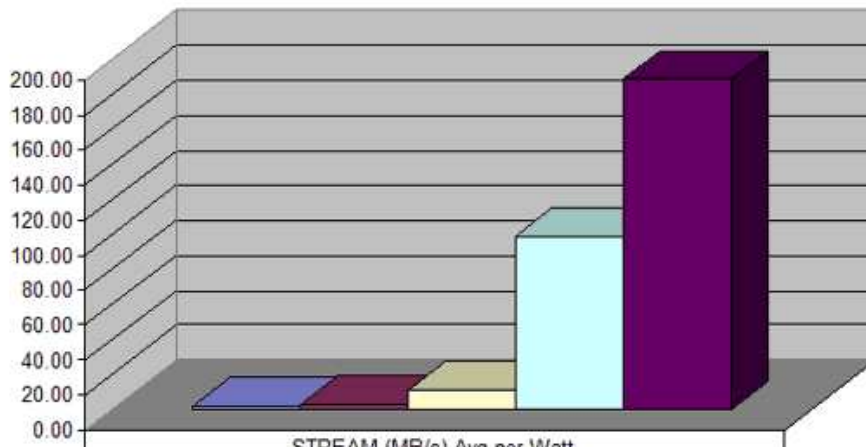
Idle & Peak Power Statistics



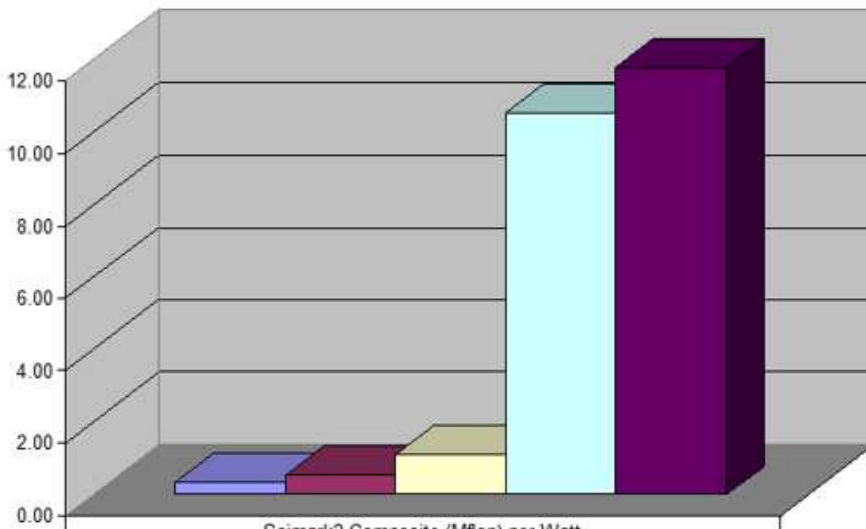
	PIII 600MHz	AMD K6-2 550MHz	VIA Eden 667MHz	Intel Core2Duo T7200	Intel Atom N270
Idle Power (W)	59	34	21	20	8
Peak Power (W)	95	63	30	49	13



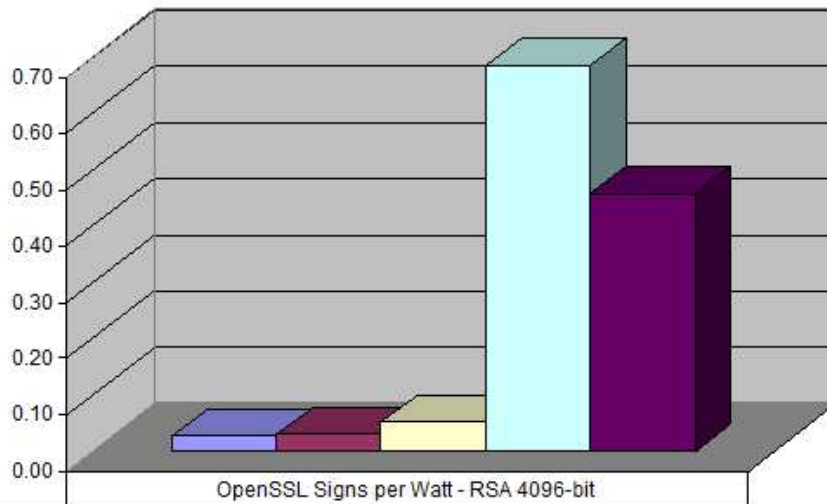
	Byte Avg (LPS) per Watt
PIII 600MHz	9813.78
AMD K6-2 550MHz	10981.40
VIA Eden 667MHz	18841.38
Intel Core2Duo T7200	118086.52
Intel Atom N270	131332.56



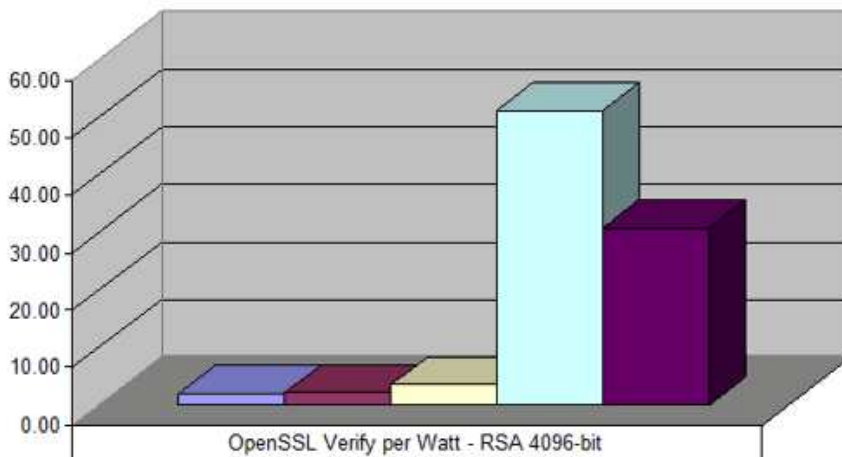
STREAM (MB/s) Avg per Watt	
PIII 600MHz	1.65
AMD K6-2 550MHz	2.53
VIA Eden 667MHz	10.78
Intel Core2Duo T7200	99.22
Intel Atom N270	188.39



Scimark2 Composite (Mflop) per Watt	
PIII 600MHz	0.34
AMD K6-2 550MHz	0.54
VIA Eden 667MHz	1.11
Intel Core2Duo T7200	10.54
Intel Atom N270	11.77



Processor	OpenSSL Signs per Watt - RSA 4096-bit
PIII 600MHz	0.03
AMD K6-2 550MHz	0.03
VIA Eden 667MHz	0.05
Intel Core2Duo T7200	0.68
Intel Atom N270	0.46



Processor	OpenSSL Verify per Watt - RSA 4096-bit
PIII 600MHz	1.86
AMD K6-2 550MHz	1.95
VIA Eden 667MHz	3.35
Intel Core2Duo T7200	51.19
Intel Atom N270	30.83

Explore Recent

- [Adventures in Benchmarking - Part 6 : Preparing Upbench v0.3](#)
- [Adventures in Benchmarking - Part 8 : Conclusion](#)

One Comment

Incoming Links

- [Revisiting Altruism - Poulsbo & More](#)

Leave a Reply

Name *

Email *

Website

Leeds Metropolitan University | Innovation North | Centre for Mobile & Converging Technologies |
Powered by FOSS - The Unstandard Theme & WP

This work is licensed under a [Creative Commons Attribution-Share Alike 3.0 Generic License](#) |



[Back to Top ↑](#)

Cancel